



THREE PINE RIDGE RANCH LOT 1

LARKSPUR, COLORADO | 20 ACRES | \$950,000

Located in one of the most desirable areas of Larkspur, the scenic Plum Creek Valley and along Perry Park Road, this exceptional parcel of land offers a rare opportunity to build your dream estate surrounded by the quiet beauty of the Front Range. This land has stunning views of the Valley, Buttes & Rock Outcroppings. The land is encompassed by rolling hills, native pastures, dramatic buttes, and mountain vistas, and captures the essence of Colorado living; untouched, unspoiled, and rich in heritage. Located just minutes from Sandstone Ranch Open Space, Spruce Mountain Open Space, Dawson Butte Ranch Open Space, Greenland Open Space, Lincoln Mountain Open Space, Columbine Open Space, Bear Dance Golf Club & Perry Park Golf Course & Country Club, this is a paradise for equestrians, hikers, nature lovers, and golfers alike. The land sits in an area steeped in Western tradition—an enclave of historic ranches where small-town values still matter and privacy is a way of life. Enjoy the seclusion of your own retreat while staying within easy reach of Castle Rock, Denver, and Colorado Springs, with two airports within an easy commute. Whether you're envisioning a luxury estate, a legacy ranch, or a private family compound, this land provides the space, serenity, and inspiration to bring your vision to life. This spectacular parcel has excellent potential as an equestrian estate. The grass is plentiful and there is enough level area for an indoor and/or outdoor arena. Create Your Legacy in the Heart of Colorado's Ranchland & build your Colorado Dream! One additional lot available.

This Colorado mountain land for sale features:

Multiple premium building sites with sweeping views and natural light

Gently rolling terrain, open meadows, and a tranquil, rural setting

Equestrian-friendly with space for horses, barns, and outbuildings

Central water access and a private road for convenient, secure entry

Agricultural zoning and low property taxes

Whether you're dreaming of a custom home, a private ranch retreat, or a long-term investment in Colorado real estate, this land checks every box. With wide-open spaces, proximity to major metro areas, and year-round recreational opportunities, this is a rare chance to claim your piece of the Colorado lifestyle.

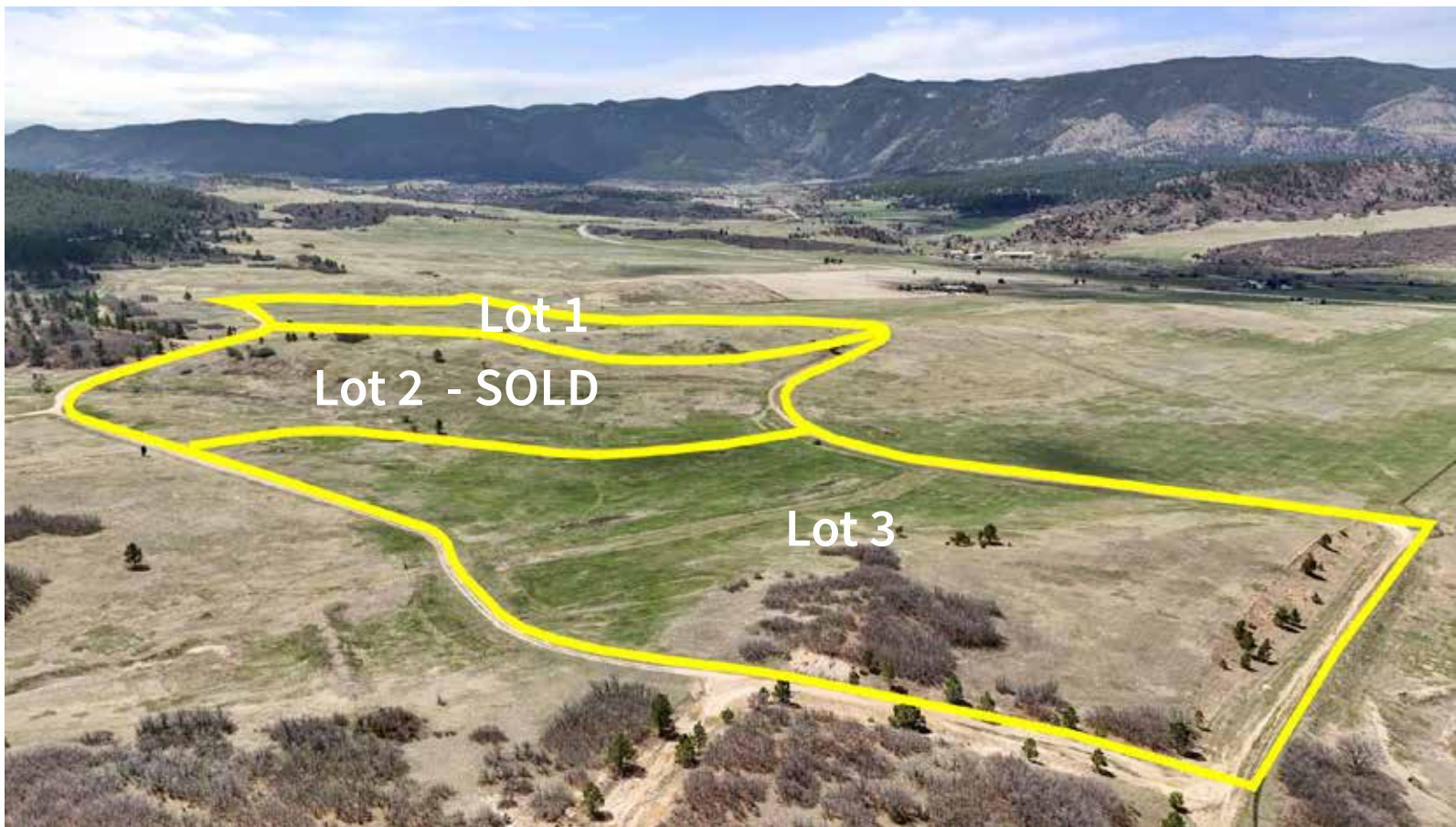
LOCATION

Larkspur, Colorado offers the perfect balance between peaceful rural living and convenient access to city amenities. Tucked between Denver and Colorado Springs, Larkspur provides a small-town atmosphere with a strong sense of community, wide-open spaces, and breathtaking views of the Rocky Mountains. Residents enjoy a slower pace of life surrounded by nature, with easy access to outdoor recreation like hiking, horseback riding, and mountain biking in nearby open spaces and trails. The area is known for its clean air, low crime rate, and top-rated schools, making it ideal for families, retirees, and anyone seeking a tranquil Colorado lifestyle. With its blend of privacy, natural beauty, and location, Larkspur is one of the best-kept secrets in Douglas County.









KEM WINTERNITZ
 719-249-7079
 kem@ranchland.com
 www.ranchland.com

CATHERINE BROWN-SWAIN
 CO-LISTED
 719-649-4515
 longhornofcolorado@yahoo.com

RANCH@COMPANY
 REAL ESTATE BROKERAGE & AUCTION SERVICES

* The information contained in this brochure has been obtained from sources believed to be reliable and is believed to be correct, but the owners and brokers do not guarantee its accuracy. Offering is subject to errors, withdrawal without notice. All distances, sizes, capacities, and similar measurements and figures are approximate. All information about properties should be independently verified by interested purchasers. All rights reserved. ©

** A division of Mason & Morse Ranch Co., LLC.